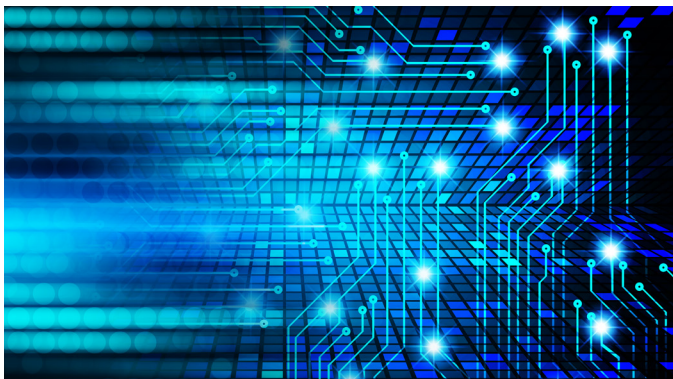


The Value of Intelligent Document Processing and iPaaS

Why structured data and integration platforms are critical to seamless business process automation and operational excellence



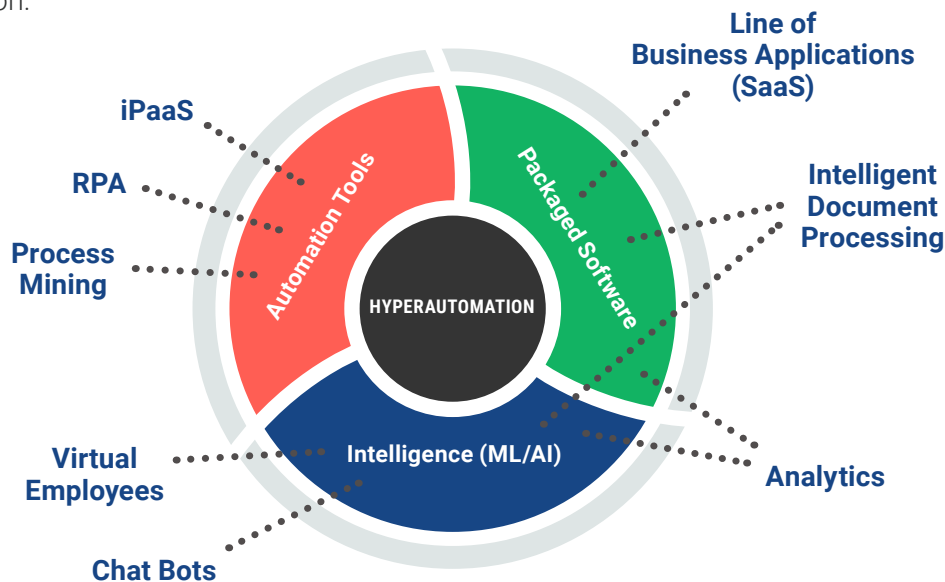
Lay the Foundation with Data

As businesses and technology evolve, one thing is clear – a data-driven approach is critical to accelerating processes and productivity. Data, in a structured state, is the universal language of how applications connect and communicate with each other. Structured, actionable data allows businesses to thrive, make smarter and faster decisions and deliver better experiences for the people who use them and their customers. Intelligent document processing (IDP) solutions are essential to any automation initiative that includes documents – both physical and digital – in the process. IDP turns any document into structured, actionable data which is a prerequisite for successful digital transformation.

Expand with Modern Integration Platforms

When IDP is connected with integration platform as a service (iPaaS) solutions, the combination amplifies the value. iPaaS solutions, like Mulesoft, Workato, Catalytic and Microsoft Power Automate, are low/no-code cloud tools that connect systems in a modern, scalable way allowing users to easily flow data delivered by IDP into various business systems across the enterprise to achieve seamless end to end automation.

The power is even greater when other AI and machine learning automation tools like RPA or business intelligence (BI) or analytic tools are connected with IDP through iPaaS. When IDP is combined with these hyperautomation tools, it offers users a more comprehensive dataset to process results and supports automation of high-volume, repetitive document processing tasks. And, that's the quest of hyperautomation: to automate everything that can be automated.



The Business Case for IDP and iPaaS

- ✓ Combining IDP + iPaaS allows the business to use one capture system for the whole enterprise. Data can be shared and repurposed between multiple departments and then sent to BI systems or ECM/Content Services for long term document and data management.
- ✓ Combining IDP + iPaaS allows customers to create complex workflows to support approvals, data archiving and distribution of extracted data.
- ✓ Adding iPaaS to IDP projects supports external validation rules and database lookups to verify approvals and spot duplicates.
- ✓ Adding iPaaS to IDP projects standardizes and secures the data connectors, which reduces time to deploy, eliminates code management, simplifies support and troubleshooting, and security risk.
- ✓ iPaaS adds full end-to-end integration allowing IDP to power business level automation.
- ✓ Hyperautomation needs structured, actionable data that can flow to any systems via iPaaS.
- ✓ RPA is designed for task automation with process-specific capture (1 task, 1 document). Bots can be fragile, costly to customize and often require a lot of maintenance.
- ✓ IDP + iPaaS is the modern approach to intelligent process automation, focusing on the way systems and applications interact rather than replicating manual human workflows. It's easy to add any other application to add further value.

The Power Play

The combination of IDP with iPaaS offers many advantages to organizations that want to not only digitally transform their department-level processes, but improve operations throughout the entire company by integrating all systems with the right data. This modern approach to intelligent process automation and hyperautomation focuses on the way systems and applications interact rather than replicating manual human workflows. The combination offers true data interoperability and a layer of document intelligence to power business. It's time to connect your data and applications company-wide.

United States HQ

+1 (888) 515-8140
info@ephesoft.com

Ephesoft, Inc.
8707 Research Dr.
Irvine, CA 92618
United States

United Kingdom

+44 118 370 2661
info.eu@ephesoft.com

Singapore

+65 800 321 1430
info.asean@ephesoft.com

Germany

+49 (0) 800 180 1708
info.eu@ephesoft.com

Italy

+39 (06) 92947876
info.it@ephesoft.com

France

info.eu@ephesoft.com

Australia

info.au@ephesoft.com